



NORTHERN CAIRN & WHWT CLUB



The Kennel Club

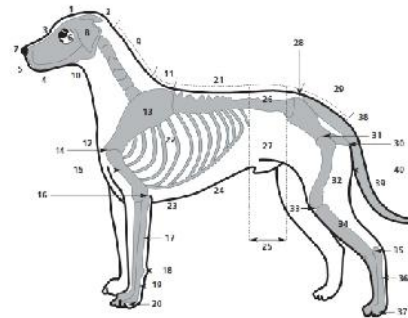
POINTS OF THE DOG ASSESSMENT

This is a mandatory course for all KC Breed Show Judges

Sunday 24TH March before judging of our Limited show

Thorpe Willoughby Village Hall,
Thorpe Willoughby, Selby.
YO8 9PA, North Yorkshire.
5 miles off A1 - Junction 42

Kennel Club Accredited Trainer
Wendy Hines (Ramsgrove Beardies)



Two morning sessions available
9am and 11am.

KC Documents will be sent out to all candidates two weeks prior to the assessment. Plus a training exercise is available on the KC Judges Academy.

For more details please contact;

Brenda M Shannon

01484 425494 – 07809 892327 email bdcairns@brendarcy.co.uk

Cost including light refreshments;

£15 for NC&WHWT members. £18 Non members .

I would like to attend the KC Points of the Dog assessment at
Thorpe Willoughby Village Hall. 24th March 2019.

NameAffix.....

Address

.....

Tel Email

Preferred time (please tick) 9am [] 11am []

I enclose payment of £18 [] non member or £15 [] member.

Cheques made payable to "Northern Cairn & WHWT Club".

Please complete, detach and send with payment to – NC&WHWT Club,
Brenda Shannon, 364 Bradley Rd, Huddersfield. HD2 1PU .